

TESTING THE 2019-CODE SOFTWARE

The 2019-Code goes into effect January 1, 2020 - just around the corner considering construction timelines. CAHP and CABEC strongly encourage all energy consultants to test out the 2019-Code beta software (also called research versions) before the code change. Testing will help gain familiarity with software and the new code, test how certain building designs fair, and surface bugs, errors, and missing features to inform the development team ahead of final release.

For residential buildings, the new code includes:

- More stringent wall and attic insulation values, including QII in the reference baseline
- A new baseline for electric water heating
- The Energy Design rating - a brand new method of code compliance that requires a user adhere to both an Efficiency-EDR and a Final-EDR simultaneously (see CAHP's EDR Fact Sheet [here](#) for more details)
- New code modeling tools and methods for PV systems and batteries (CAHP's upcoming PV & Battery Fact Sheet is scheduled to print in November 2018)
- Updated TDV multipliers for the 2019 Code – the 2019 TDV multipliers place a large premium value on electric energy saved in the summer afternoon and twilight hours, even more-so than prior code cycles

DOWNLOADING AND TESTING

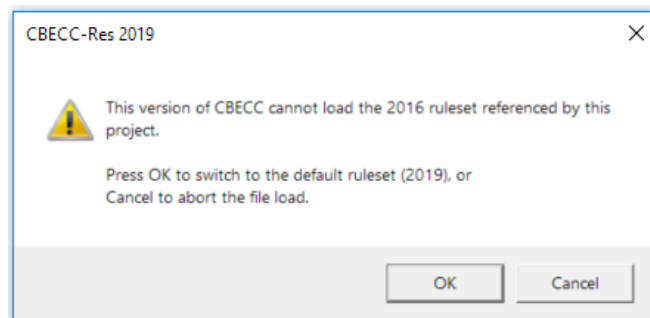
The research versions for both residential and commercial code are built on the same energy simulation engines and software architecture as their 2013 and 2016 Code counterparts. Therefore, those experienced with CBECC software from prior code cycles will be working in a familiar interface. As with prior code cycles, the CEC will allow third-party software platforms such as EnergyPro, WrightSoft, and IES VE, to tap into the same modeling engine that supports CBECC. It is unknown at this time which alternative platforms will go through that approval process. For testing 2019 versions of CBECC, test users should follow each code-version's quick-start guide for simple instruction on downloading and running the new tool:

Code Version	Download Site	Issue Log Email	Quick Start Guide
Residential	www.bwilcox.com/BEES/cbecc2019.html	CBECC.Res@gmail.com	CBECC-Res 2019 Quick Start
Commercial	bees.archenergy.com/software2019.html	CBECC.Com@gmail.com	CBECC-Com 2019 Quick Start

TESTING THE 2019-CODE SOFTWARE

It is strongly encouraged that when installing the new software that you don't use the same file directory on your home machine as is used for either CBECC 2016 or CBECC 2013.

The software is forwards-compatible – which means you can open building simulation files from prior code-years directly into the 2019-Code software. When doing so, CBECC will prompt you to update the file to the 2019 Code ruleset, and then save the updated file as a .ribd2019 file type. This lets you test a building design you've already started for 2016 Code with the upcoming code. You cannot, however, open a .ribd2019 file with the 2013 or 2016 code software versions.



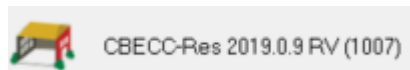
The research versions of the software include 2019 TDV multipliers, and the draft 2019 Code Standard Design ruleset. Since that ruleset is still in draft mode, and the software still under development, the research versions cannot be used for compliance and will not produce valid CF-1R or XML files for compliance purposes. Also, the research version of the residential software is not yet programmed to support alterations and additions projects.

REPORTING ERRORS

If you encounter unexpected results, bugs, error messages, or missing features - the CEC requests that you send your issues to two central issues-log emails setup expressly for this purpose:

CBECC.Res@gmail.com and CBECC.Com@gmail.com. In the text of your email, be sure to include the following:

1. The precise version of software. This can be found by using the Help -> About dropdowns



2. The nature of the issue in as much detail as possible– if this is for an unexpected result, include what happened as well as what you expected to happen
3. The steps taken to produce the error, using as much detail as possible
4. Screen shots or the text of any error messages from the software